

**LIMP2 Antibody**  
**Catalog # ASC10715****Specification**

---

**LIMP2 Antibody - Product Information**

Application	WB, IHC-P, E
Primary Accession	<a href="#">Q14108</a>
Other Accession	<a href="#">AAH21892</a> , <a href="#">18257312</a>
Reactivity	Human, Mouse
Host	Rabbit
Clonality	Polyclonal
Isotype	IgG
Application Notes	LIMP2 antibody can be used for detection of LIMP2 by Western blot at 1 and 2 µg/mL. Despite its predicted molecular weight, LIMP2 runs at approximately 80 - 85 kDa in SDS-PAGE. Antibody can also be used for immunohistochemistry starting at 10 µg/mL.

**LIMP2 Antibody - Additional Information**

Gene ID	950
<b>Target/Specificity</b>	
SCARB2;	

**Reconstitution & Storage**

LIMP2 antibody can be stored at 4°C for three months and -20°C, stable for up to one year. As with all antibodies care should be taken to avoid repeated freeze thaw cycles. Antibodies should not be exposed to prolonged high temperatures.

**Precautions**

LIMP2 Antibody is for research use only and not for use in diagnostic or therapeutic procedures.

**LIMP2 Antibody - Protein Information**

**Name** SCARB2

**Synonyms** CD36L2, LIMP2, LIMPII

**Function**

Acts as a lysosomal receptor for glucosylceramidase (GBA1) targeting.

**Cellular Location**

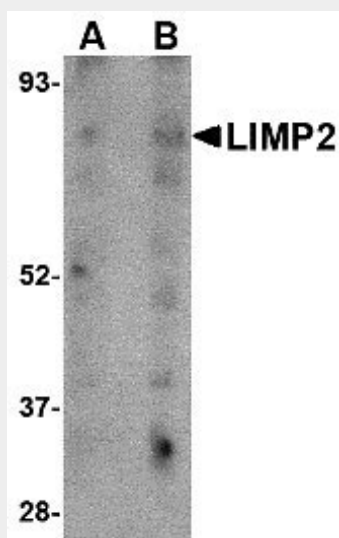
Lysosome membrane; Multi-pass membrane protein

## LIMP2 Antibody - Protocols

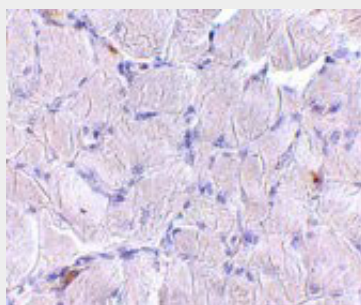
Provided below are standard protocols that you may find useful for product applications.

- [Western Blot](#)
- [Blocking Peptides](#)
- [Dot Blot](#)
- [Immunohistochemistry](#)
- [Immunofluorescence](#)
- [Immunoprecipitation](#)
- [Flow Cytometry](#)
- [Cell Culture](#)

## LIMP2 Antibody - Images



Western blot analysis of LIMP2 in human skeletal muscle tissue lysate with LIMP2 antibody at (A) 1 and (B) 2  $\mu\text{g/mL}$ .



Immunohistochemistry of LIMP2 in human skeletal muscle tissue with LIMP2 antibody at 10  $\mu\text{g/mL}$ .

## LIMP2 Antibody - Background

**LIMP2 Antibody:** The lysosomal integral membrane protein 2 (LIMP2) is a heavily glycosylated type III transmembrane protein, the majority of which exists in the lumen of the lysosome and a cytoplasmic domain of approximately 20 amino acids. A deficiency of LIMP2 in mice causes uretic pelvic junction obstruction, deafness, and peripheral neuropathy associated with impaired vesicular trafficking and distribution of apically expressed proteins. More recently, LIMP2 was shown to act as a receptor to bind beta-glucocerebrosidase, the enzyme defective in Gaucher disease, a lysosomal

storage disorder. LIMP2-deficient mice showed missorted as well as secreted beta-glucocerebrosidase, suggesting that LIMP2 also functions as the mannose-6-phosphate-independent trafficking receptor.

### **LIMP2 Antibody - References**

Fujita H, Saeki M, Yasunaga K, et al. Isolation and sequencing of a cDNA clone encoding 85kDa sialoglycoprotein in rat liver lysosomal membranes. *Biochem. Biophys. Res. Commun.*1991; 178:444-52.

Gamp A, Tanaka Y, Lullmann-Rauch R, et al. LIMP-2/LGP85 deficiency causes uretic pelvic junction obstruction, deafness and peripheral neuropathy in mice. *Hum. Mol. Genet.*2003; 12:631-46.

Knipper M, Claussen C, Ruttiger L, et al. Deafness in LIMP2-deficient mice due to early loss of the potassium channel KCNQ1/KCNE1 in marginal cells of the stria vascularis. *J. Physiol.*2006; 576:73-86.

Reczek D, Schwake M, Schroder J, et al. LIMP-2 is a receptor for lysosomal mannose-6-phosphate-independent targeting of b-glucocerebrosidase. *Cell*2007; 131:770-83.